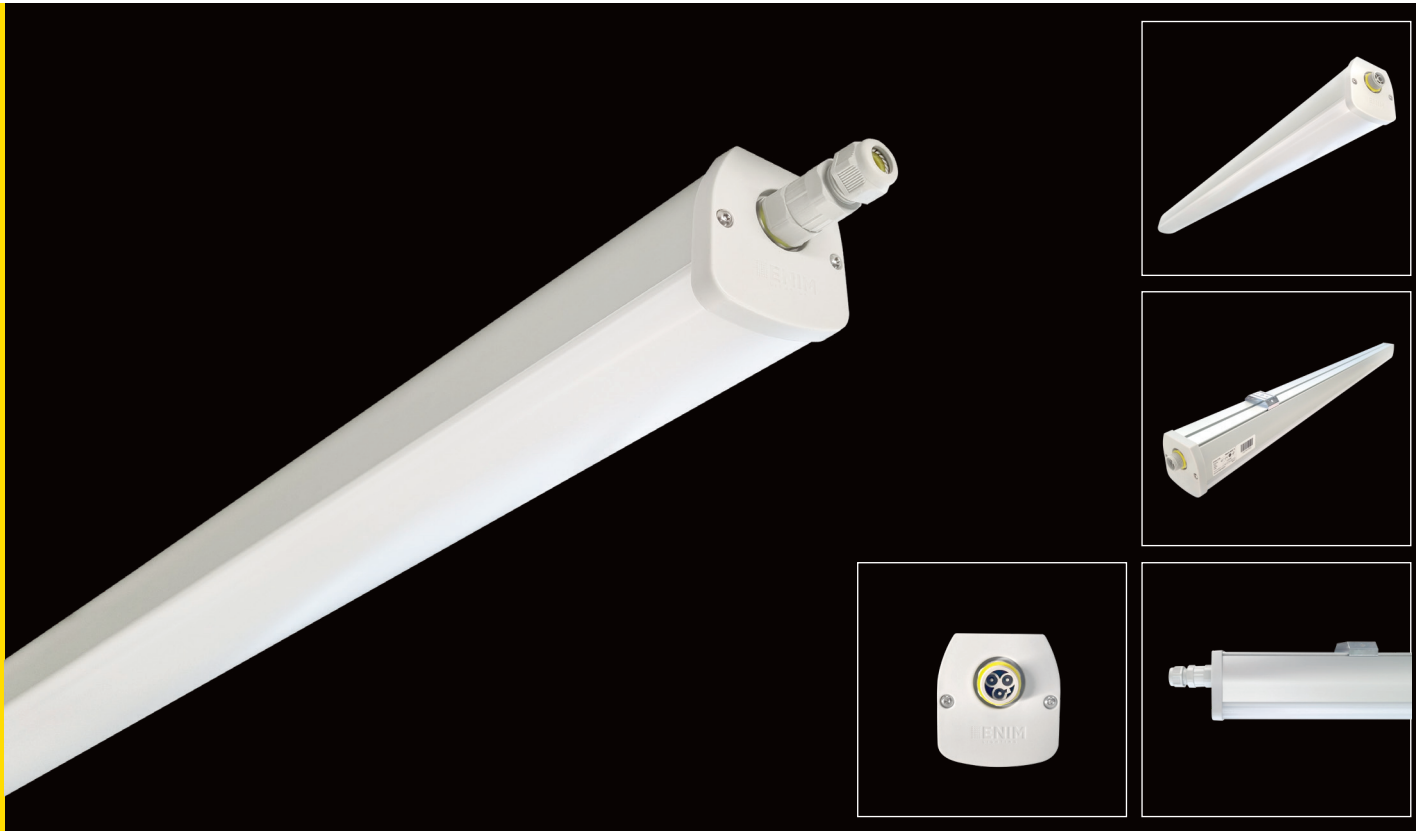


INDUS



DESCRIPTION

Industrial low-bay luminaire INDUS designed for energy-efficient and precise lighting. With DALI control, an IP66 protection rating and operation in temperatures ranging from -20°C to +50°C, it delivers durability and performance in demanding environments. Available in a range of 39 W to 90 W, INDUS easily adapts to different lighting requirements and offers flexible installation options, both pendant (with optional extended cable) and floor mounting.

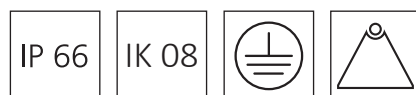
APPLICATIONS

INDUS luminaires are used across various industrial and commercial environments, including warehouses, terminals, industrial refrigerators, shops, food and medical facilities, furniture manufacturing, car-care centers and parking areas.

BENEFITS

- **Reliable producer:** Designed, developed and manufactured by ENIM, a trusted EU producer.
- **Exceptional Efficiency:** High-performance LEDs deliver up to 166 lm/W, ensuring maximum brightness with minimal energy consumption.
- **Versatile Power Options:** Available in 39 W to 90 W configurations, adaptable to various lighting needs.
- **Intelligent Control:** DALI compatibility and motion sensors enhance energy savings and user convenience.
- **Casambi possibility:** Available as an option with Casambi-ready drivers.
- **Engineered for Longevity:** An anodized aluminum heat sink and optional painted metal cover ensure durability, with a lifespan of up to 100,000 hours (L90 B10).
- **Rugged Protection:** IP66-rated for full resistance to dust and powerful water jets.
- **Compact & Convenient:** Simple design for easy integration into various environments.
- **Flexible Installation:** Supports pendant (with optional extended cable) and floor mounting.

TECHNICAL INFORMATION:

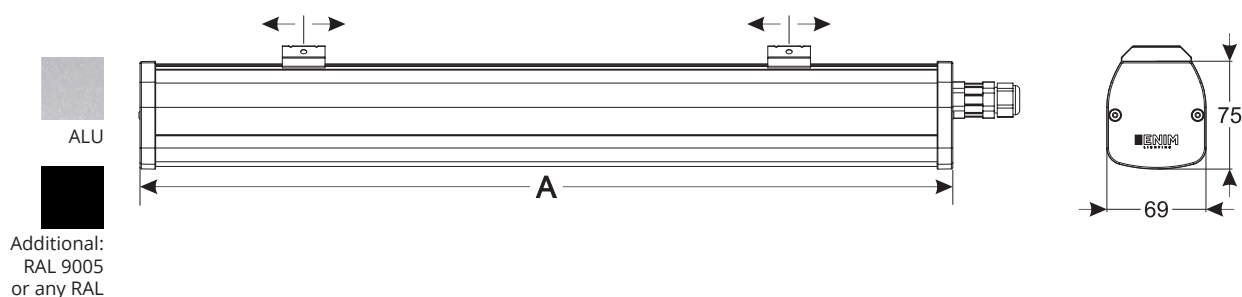
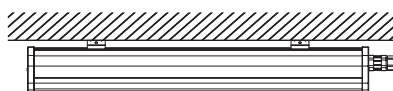


ELECTRICAL	V	Input voltage	220-240
	Hz	Rated voltage	50-60 Hz
	W	Luminaire wattage	39-90
	cosφ	Power factor	≥ 0,95
OPTICAL	Lm	Luminous flux	6113-14953
	Lm/W	Luminous efficacy	Up to 166
	K	Color temperature	2700-6500
	C°	Performance temperature	-20°C ≤ Ta ≤ +50°C
	CRI	Color rendering index	≥80

Type	6	9	12	15
Power	39	57	74	91
Luminous Flux, Lm	6435	9348	12284	14924
Efficacy, Lm/W	165	164	166	164

Chromatic tolerance (original MacAdam)	Not higher than 5
Life expectancy L/B	L90 B10 by 100000 hrs (Ta = 25 °C)

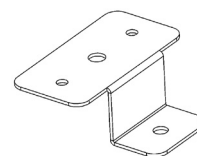
HOUSING	Size	571 X 69 X 75 mm; 852 X 69 X 75 mm; 1133 X 69 X 75 mm; 1414 X 69 X 75 mm	
	Weight	Max 2,3 kg	
	Body material	Heat sink: aluminium extrusion, anodized Mounting bracket: steel	
	Protection	IP66	
	Installation	Floor mounting	Pendant (optional)



OPTICS	Light source	OSRAM/SAMSUNG/LUMILEDS/BRIGELUX
	Cover	PC / PMMA white cover
	Maintenance	Optical module sealed for life. No internal cleaning required

DRIVER	Input voltage	220-240 V
	Functions	Overload protection, Short-circuit protection, No-load protection
	Interfaces (control)	ON-OFF; DALI; Corridor FUNCTION; SwitchDIM; 1-10V

OPTIONAL	Accessories	
	Code	Name
	MET0397	INDUS_Z_bracket RAL7035



REMARKS	Power factor (Cosφ)	≥ 0.95
	Recommended mounting height	2,5-8 m
	Luminaires are ready to install	

LOGISTIC DETAILS:

Luminaire dimensions / cm	Full pallet size/cm L*W*H	Number of luminaires per row	Number of rows	QTY per pallet/pcs	Kg per pallet		Volume per pallet	LDM (loading meters), m
					Net	Gross		
571 X 69 X 75	120 X 80 X 135	10	11	110	132	167.6	1.296 m³	0.4
852 X 69 X 75	120 X 80 X 135	7	11	77	115.5	151.4	1.296 m³	0.4
1133 X 69 X 75	130 X 80 X 135	7	11	77	146.3	189.7	1.404 m³	0.43
1414 X 69 X 75	160 X 80 X 135	7	11	77	177.1	222.8	1.728 m³	0.53